



**LAHC WALLSEND - DOUGLAS STREET  
19-23 DOUGLAS STREET & 6 NEIL PLACE  
DEVELOPMENT APPLICATION**

Prepared for

**LAND AND HOUSING CORPORATION**

**MARCH 2024**



Australia  
China  
South East Asia

Follow us on



placedesigngroup.com

Report title	LAHC Wallsend, Douglas Street
Prepared for	Land And Housing Corporation
Authors	Anna McFarlane
Revision number	08
Revision issue date	March 2024
Approved	Nick Ison
Reason for revision	N/A

Disclaimer: This report has been prepared in accordance with the scope of services described in the contract or agreement between Place Design Group Pty Ltd ACN 082 370063 and the Client. The report relies upon data, surveys, measurements and results taken at or under the particular times and conditions specified herein. Any findings, conclusions or recommendations only apply to the aforementioned circumstances and no greater reliance should be assumed or drawn by the Client. Furthermore, the report has been prepared solely for use by the Client and Place Design Group accepts no responsibility for its use by other parties.

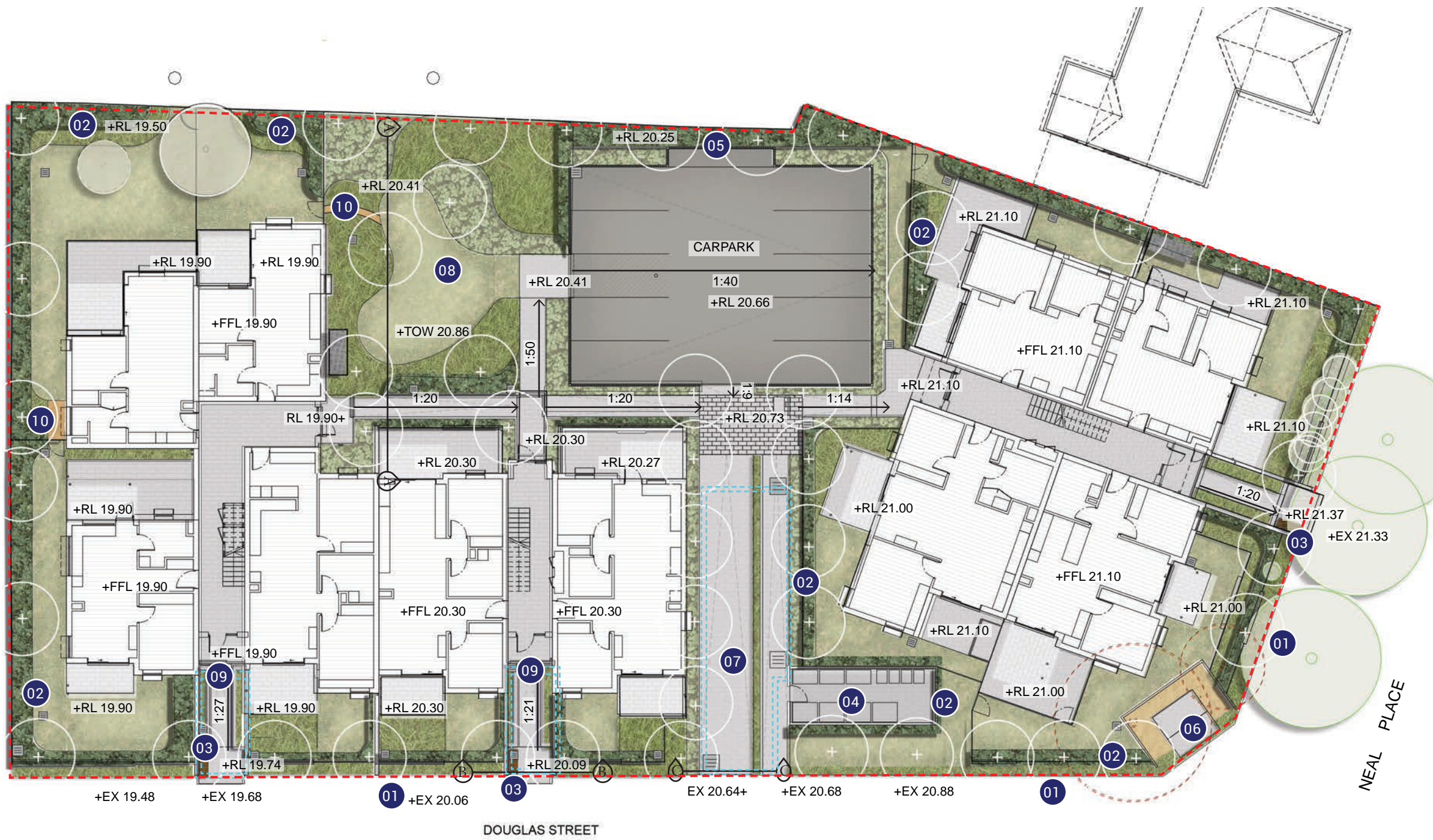
# CONTENTS

LANDSCAPE GROUND FLOOR DESIGN	3
SECTION AA	4
SECTION BB AND CC	5
PLANTING STRATEGY	6
PLANTING PALETTE	7
PLANTING SCHEDULE	8
FENCING STRATEGY	9
INDICATIVE MATERIALS AND FURNITURE	10
TYPICAL LANDSCAPE DETAILS	11
TYPICAL LANDSCAPE DETAILS	12



LANDSCAPE GROUND FLOOR DESIGN

- LEGEND
- Site Extent
  - Existing Tree - Retained
  - Existing Tree - Removed
  - Proposed Trees
  - Concrete Paving
  - Steppers
  - Turf
  - Shrubs + Ground covers (Mix 1)
  - Shrubs + Ground covers (Mix 2)
  - Shrubs + Ground covers (Mix 3)
  - Hedge Planting (Mix 4)
  - Shrubs + Ground covers (Mix 5)
  - Decomposed Granite
  - Stormwater Pit
  - Underground OSD Tank
  - 01 Street frontage feature tree
  - 02 Plant hedging and screening
  - 03 Bench seating
  - 04 Proposed bin store location
  - 05 Screen hedge to car park
  - 06 Potential substation location
  - 07 Vehicle Access - Entry and exit
  - 08 Community Garden
  - 09 600mm raised concrete planters at building entrance
  - 10 Deco granite Access Paths





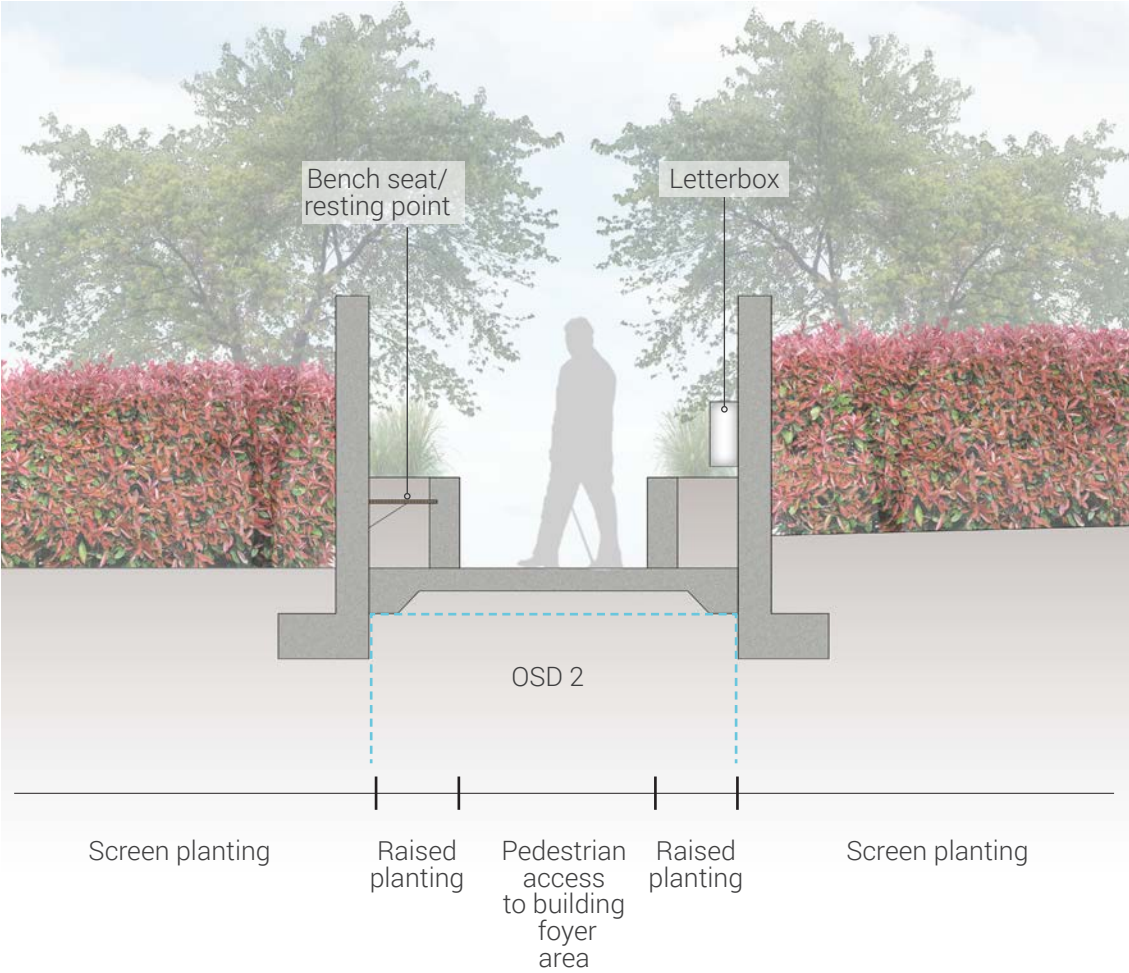
SECTION AA



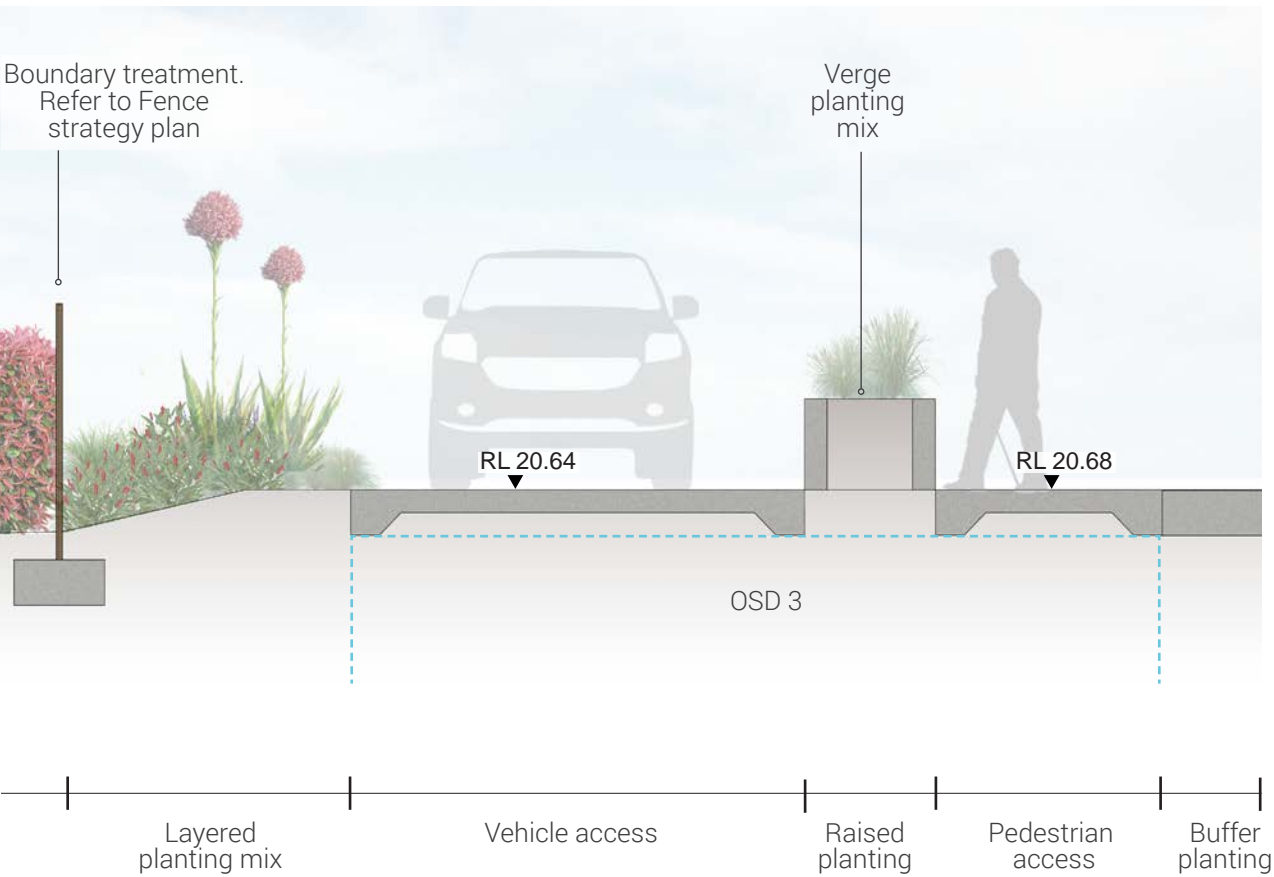
Refer to Landscape Ground Floor Design (pg3) for section locations.

SECTION BB AND CC

SECTION BB



SECTION CC



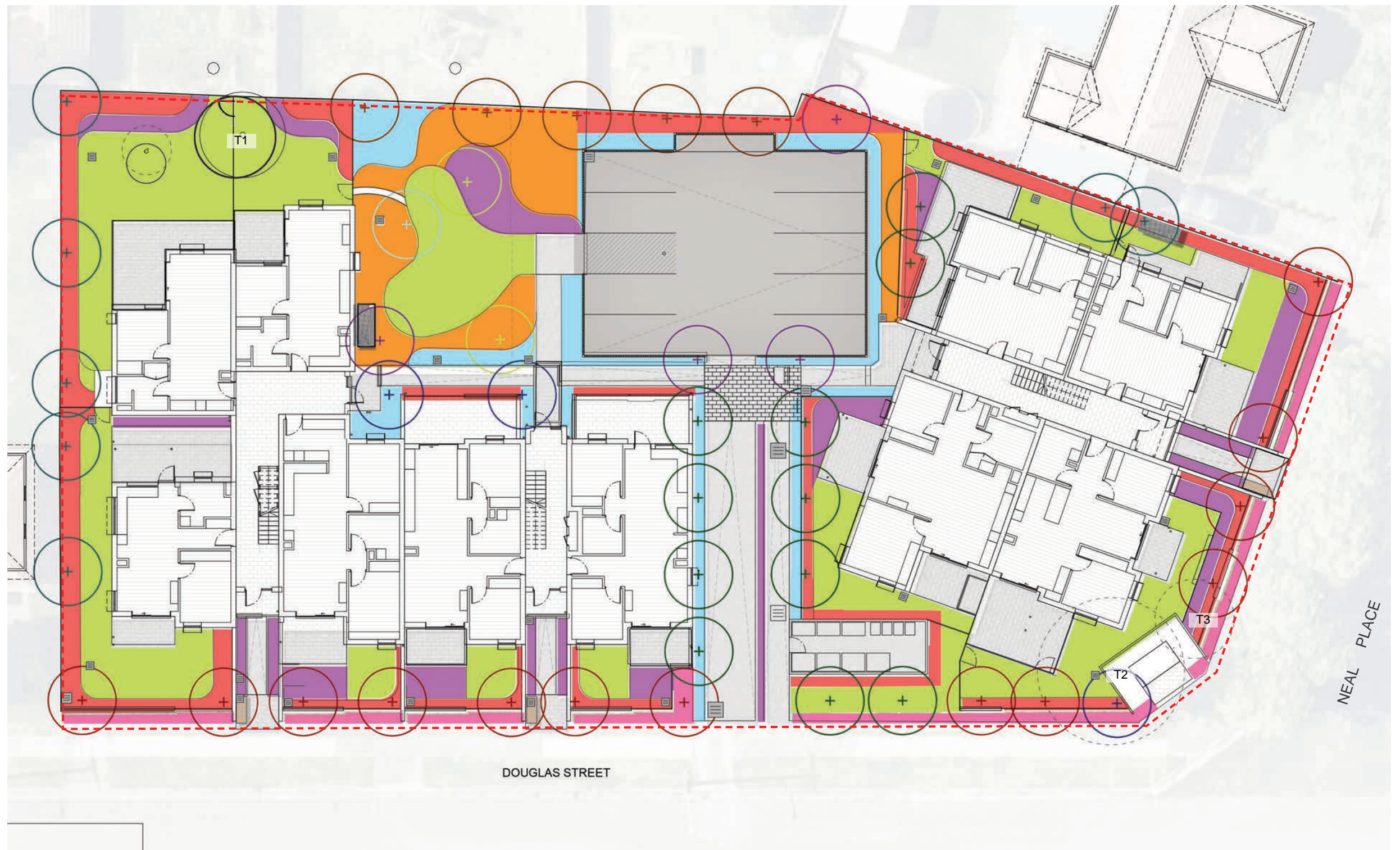
Refer to Landscape Ground Floor Design (pg3) for section locations.



# PLANTING STRATEGY

## LEGEND

- Site Extents
- Existing Tree - Retained
- Existing Tree - Removed
- + *Backhousia citriodora*
- + *Elaeocarpus eumundi*
- + *Lagerstroemia indica*
- + *Magnolia 'Little Gem'*
- + *Malus ioensis 'plena'*
- + *Melaleuca styphelioides*
- + *Pittosporum angustifolium*
- + *Tristaniopsis laurina*
- Mix 1
- Mix 2
- Mix 3
- Mix 4
- Mix 5
- Turf





PLANTING PALETTE

MIX 1



Callistemon viminalis



Callistemon 'White Anzac'



Melaleuca 'Claret Tops'



Myoporum parvifolium

MIX 2



Liriope muscari 'Just Right'



Lomandra 'Tanika'



Ozothamnus diosmifolius  
'Coral Flush'



Gazania tomentosa



Phormium 'Bronze Baby'

MIX 3



Liriope muscari 'Just Right'



Pandorea pandorana  
'Flat White'



Dianella caerulea



Doryanthes excelsa



Syzygium australe

MIX 5



Alpinia caerulea 'Atherton'



Atriplex nummularia



Chamelaucium uncinatum



Microseris lanceolata



Lomandra longifolia



Prostanthera incisa



Salvia rosmarinus



Viola hederacea

TREES



Backhousia citriodora



Elaeocarpus eumundi



Lagerstroemia indica



Magnolia 'Little Gem'



Malus ioensis 'plena'



Melaleuca styphelioides



Pittosporum  
angustifolium



Tristaniopsis laurina



PLANTING SCHEDULE

SYM	Botanical Name	Common Name	Mature HxW	Pot Size	Spacing /m2	Qty
TREES						
BC	Backhousia citriodora	Lemon Myrtle	20m x 5m	100L	As shown	1
EE	Elaeocarpus eumundi	Native Quandong Tree	25m x 6m	100L	As shown	7
LI	Lagerstroemia indica	Crepe Myrtle	8m x 6m	100L	As shown	5
ML	Magnolia ‘Little Gem’	Magnolia ‘Little Gem	4m x 2.5m	100L	As shown	13
MI	Malus ioensis ‘plena’	Crab Apple	6m x 5m	100L	As shown	1
MS	Melaleuca styphelioides	Prickly Paperbark	15m x 3m	100L	As shown	4
PA	Pittosporum angustifolium	Weeping Pittosporum	8m x 5m	100L	As shown	2
TL	Tristaniopsis laurina	Water Gum	12m x 6m	100L	As shown	10
Mix 1						
Cv	Callistemon viminalis	Weeping Bottlebrush	9m x 5m	150mm	1.5	32
Cwa	Callistemon ‘White Anzac’	Bottlebrush ‘White Anzac’	1.5m x 3m	150mm	1.5	32
Mct	Melaleuca ‘Claret Tops’	Honey Myrtle	1.2m x 1m	150mm	1.5	32
Mp	Myoporum parvifolium	Boobialla	0.3m x 3m	150mm	1.5	32
Mix 2						
Gt	Gazania tomentosa	Silver Leaf Gazania	0.3m x 1.5m	150mm	8	166
Lm	Liriope muscari ‘Just Right’	Lilyturf	0.5m x 0.5m	150mm	6	125
LI	Lomandra ‘Tankia’	Mat Rush	0.6m x 0.65m	150mm	6	125
Od	Ozothamnus diosmifolius ‘Coral Flush’	Rice Flower	2m x 1m	150mm	6	125
Pb	Phormium ‘Bronze Baby’	Dwarf New Zealand Flax	1m x 1m	150mm	6	125
Mix 3						
Dc	Dianella caerulea	Blue Flax-lily	1m x 2m	150mm	4	134
De	Doryanthes excelsa	GyMEA Lily	4m x 3m	200mm	2	67
Lm	Liriope muscari ‘Just Right’	Just Right	0.5m x 0.5m	150mm	6	200
Pp	Pandorea pandorana ‘Flat White’	Wonga Wonga Vine	3m x 0.6m	150mm	4	134
Mix 4						
Sa	Syzygium australe	Brush Cherry	6m x 3m	200mm	1.5	446
Mix 5						
Ac	Alpinia caerulea ‘Atherton’	Native Ginger	2m x 1m	200mm	4	57
An	Atriplex nummularia	Salt Bush	3m x 5m	150mm	4	57
Cu	Chamelaucium uncinatum	Geraldton Wax Flower	5m x 6m	200mm	2	28
LI	Lomandra longifolia	Mat Rush	1.2m x 1m	150mm	4	57
MI	Microseris lanceolata	Yam Daisy	0.3m x 0.3m	150mm	8	112
Pi	Prostanthera incisa	Native Thyme	3m x 3m	150mm	4	57
Sr	Salvia rosmarinus prostratus	Creeping Rosemary	0.3m x 2m	150mm	6	84
Vh	Viola hederacea	Native Violet	0.2m x 1m	150mm	8	112
TURF						
-	Stenotaphrum secundatum	Buffalo	-	-	-	285m2



# FENCING STRATEGY

## LEGEND

- Fence Type 1: 400mm aluminium slats over 800 BK-2 brick wall  
Height: 1200mm total
- Fence Type 2: Aluminum Slats  
Height: 1200mm
- Fence Type 3: 400mm aluminium slats over 800 BK-1 brick wall  
Height: 1200mm
- Fence Type 4: 600mm aluminium slats over 1200mm brick wall  
Height: 1800mm
- Fence Type 5: colorbond solid fence  
Height: 1800mm
- Fence Type 6: Vehicle Crash Barrier  
Height: 1100mm
- Fence Type 7: Aluminium slats  
Height: 1500mm
- Fence Type 8: Aluminium slats  
Height: 1800mm





INDICATIVE MATERIALS AND FURNITURE



Colorbond steel fence. Colour: Monument  
2356mm (L) x 1800mm (H)



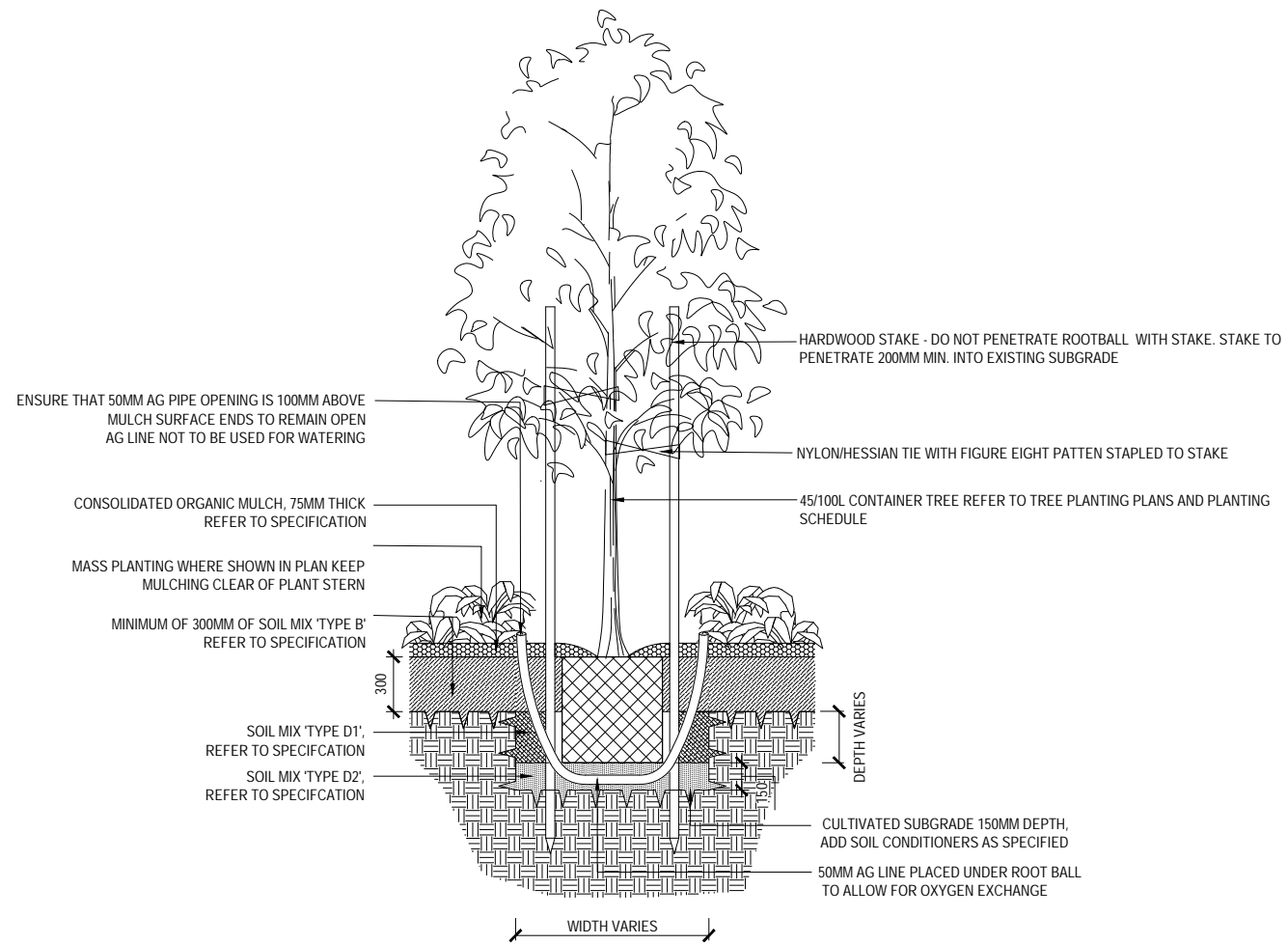
Aluminium slat fence. Colour: Monument  
1200mm (H)



Concrete Pavers. Type and Colour to be confirmed

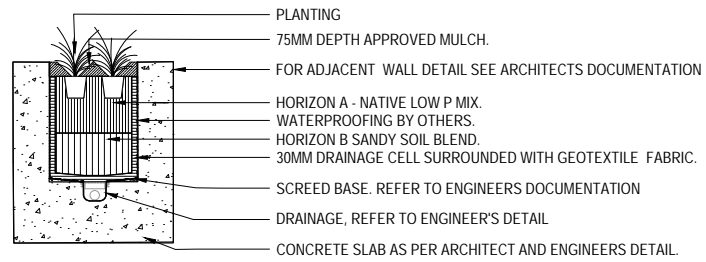


## TYPICAL LANDSCAPE DETAILS

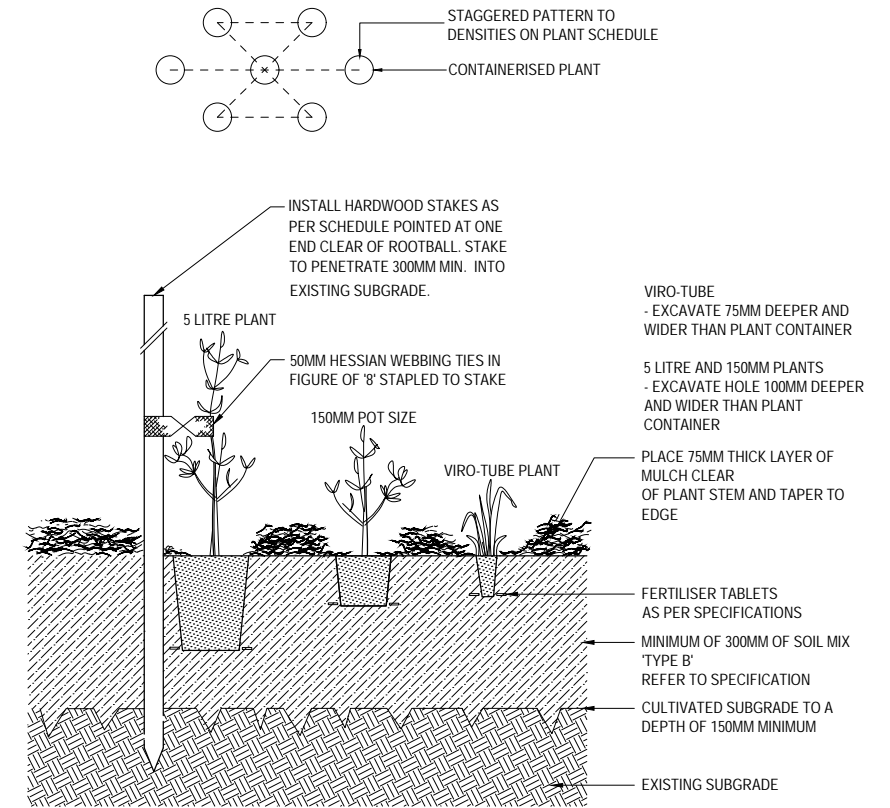


NOTE: TREE PLANTING HOLE DIMENSIONS ACCORDING TO CONTAINER SIZE: WIDTH MIN. 3X ROOT BALL DIAMETER (MIN. 820 / 1100 / 1400mm FOR 45/75/100L CONTAINERS) AND DEPTH MIN. 150mm BELOW ROOT BALL DEPTH.

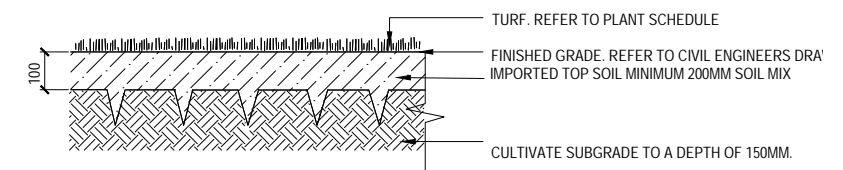
01 TREE IN MASS PLANTING  
SCALE 1:20



02 CONCRETE PLANTER WALL DETAIL  
SCALE 1:20



03 TYPICAL MASS PLANTING  
SCALE 1:20



GENERAL NOTES:

REGULARLY REMOVE WEED GROWTH THROUGHOUT PLANTED AND MULCHED AREAS DURING THE COURSE OF PROJECT CONSTRUCTION.

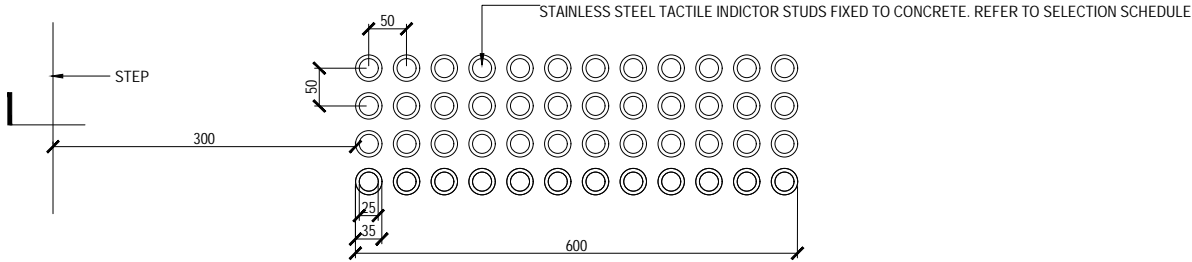
LIGHTLY TAMP OR ROLL SURFACE OF TURF AFTER INSTALLATION TO ENSURE THAT TURF ROOTS ARE IN CONTACT WITH TOPSOIL.

TURF ON LOW SIDE OF ANY PATH OR EDGE TO  
FINISH 10MM BELOW FINISHED PATH/EDGE LEVEL.

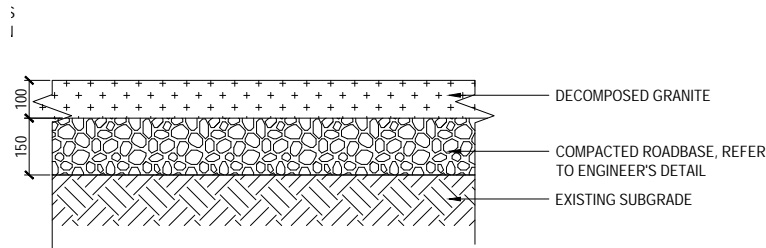
04 TYPICAL TURF DETAIL  
SCALE 1:10



# TYPICAL LANDSCAPE DETAILS



05 TYPICAL TACTILE INDICATOR DETAIL  
SCALE 1:20



06 TYPICAL DECOMPOSED GRANITE DETAIL  
SCALE 1:20